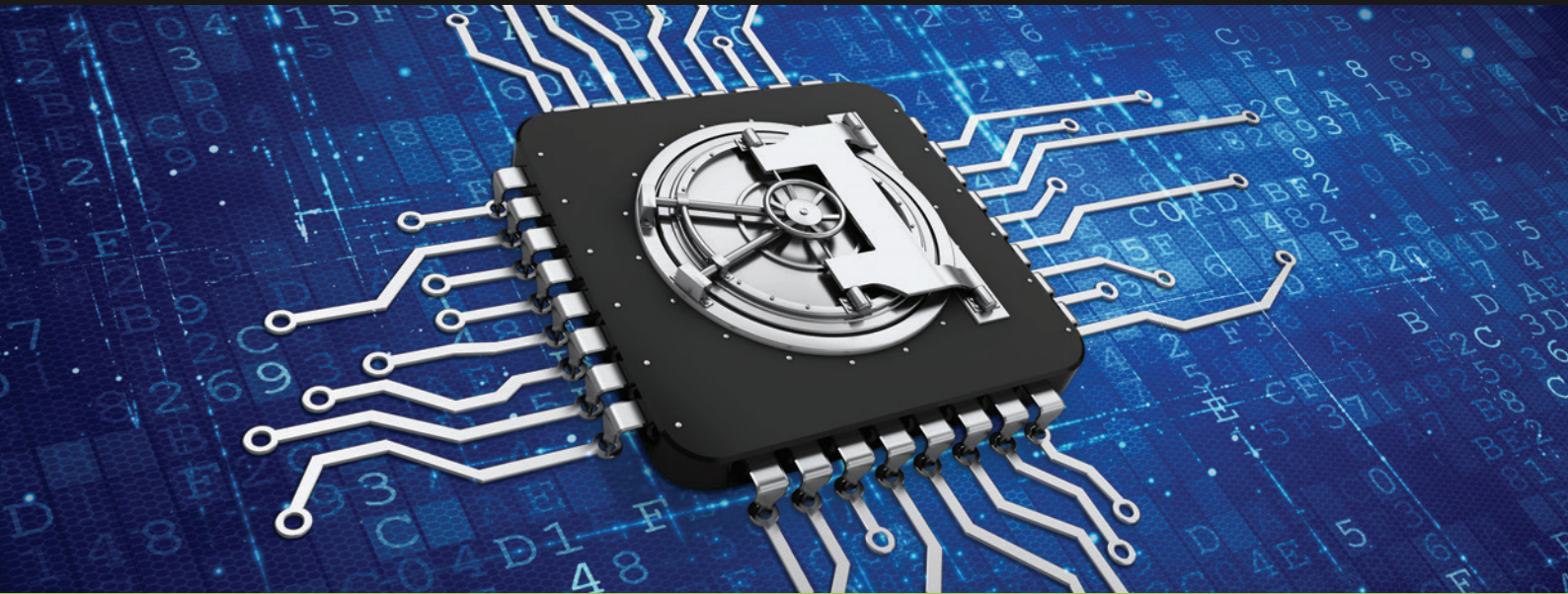




# PASSMAN

## ENTERPRISE PASSWORD MANAGEMENT MADE SIMPLE



Secure password safe with effective password sharing. Automatical password changing to comply with the GDPR requirements! On-Premise or Cloud version.

## WHY PASSMAN IS A GREAT CHOICE?



### SAFE PASSWORD MANAGEMENT

Passwords are stored in a centralized environment with enhanced permission controls. This ensures that only users with appropriate privileges can access a particular password. Websites/applications that require a multifactor code can also be shared using the PassMan OTP feature



### PASSWOR AUTO-CHANGER

PassMan can automatically rotate stored and synchronized passwords or SSH keys on targets based on preconfigured password policies. This can be triggered when exclusive use of a password or SSH key is required for a specific period (check-in) or according to a preset time interval.



### SAFE LOGIN

"1-Click Connect" feature allows users to connect to specific targets/destinations without knowing their account credentials. You can choose either a browser extension or a native Linux or Windows PassMan client called PMSL (PassMan Secure Login).



### PASSWORD RECOVERY

Restoring a target/destination from a backup may result in passwords being out of sync.

PassMan allows you to reset your old password simply by entering the date of the backup you want, so you can log in again.



### WORK SESSION RECORDING

PassMan works as a Privileged Access Management (PAM) solution. This means the software can create, manage, monitor and record work sessions.



### HIGH AVAILABILITY

High availability is essential when using a password manager program in your enterprise. Automatic failover with no downtime is ensured by a 3-member cluster solution, which makes smooth operation possible even if double errors occur.

# OTHER FUNCTIONS



## ENHANCED PASSWORD ENCRYPTION

Instead of storing passwords on paper or in a traditional physical safe, we introduce a new digital password vault where your credentials are stored encrypted (AES256). A master password is required to unlock your vault.



## SECURE LOGIN FROM BROWSER

When you visit a web page in your browser that asks for a password for log in, PassMan will enter the required data with a click or even automatically and you are already logged in! You can use a password to log in, but you can't even see it yourself.



## ACTIVITY LOG

Review user actions with PassMan! You will know when and which user requested a new password, or changed an old one on a particular target/destination. Traceability helps auditors and shortens the duration of audits.



## MANAGING SSH-KEYS

Simply import, store, generate, change SSH-Keys in PassMan. Even automatically. You can also login with SSH key.



## EMAIL ALERTS, NOTIFICATIONS

PassMan sends you alerts and notifications so you will be able to prevent any potential damage.



## BUILT-IN REPORTS

Use our pre-set reports to get answers to your questions concerning the password management.



## NO NEED FOR INSTALLATION

There is no need for installation in case of PassMan since the virtual machine has every component pre-installed (operational system, database handler, etc.).



## SSO AND MS AD INTEGRATION

User authentication can be done with Active Directory, Azure AD, Jira Cloud, or SAML2, reducing user management costs. Local admin access remains available even in the event of external provider failure or outage



## AUTOMATIC WINDOWS DISCOVERY

Instead of time-consuming manual input, user accounts can be discovered automatically so that the machines are created. Of course, we also change the passwords for imported user accounts so that only authorized users in PassMan have access to "secrets."



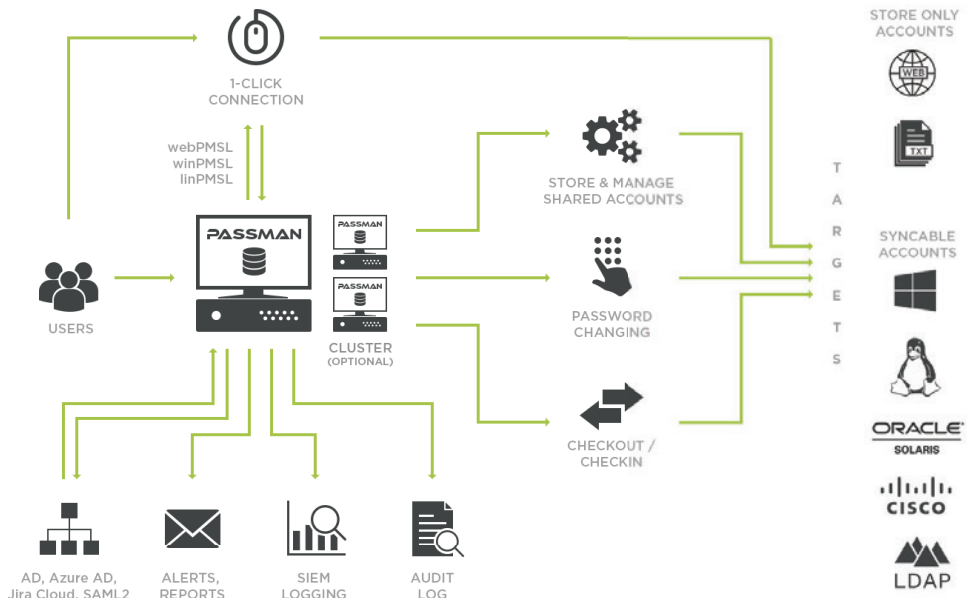
## RESET PASSWORD OF WINDOWS SERVICES

If you change the password for an account that is running windows services somewhere, the passwords for windows services will also be reset on these Windows machines. This ensures full compliance with the password change policy.



## TWO-FACTOR AUTHENTICATION (2FA)

The usual login name/password authentication method in PassMan can be completed by using check-in codes of external authentication providers (e.g. Google Authenticator or LastPass), which makes it possible to confirm your identity for sure.



Arpad Boldog

+36 30 297 8382

arpad.boldog@moresimp.com

Follow us!

[passman.co](https://passman.co)