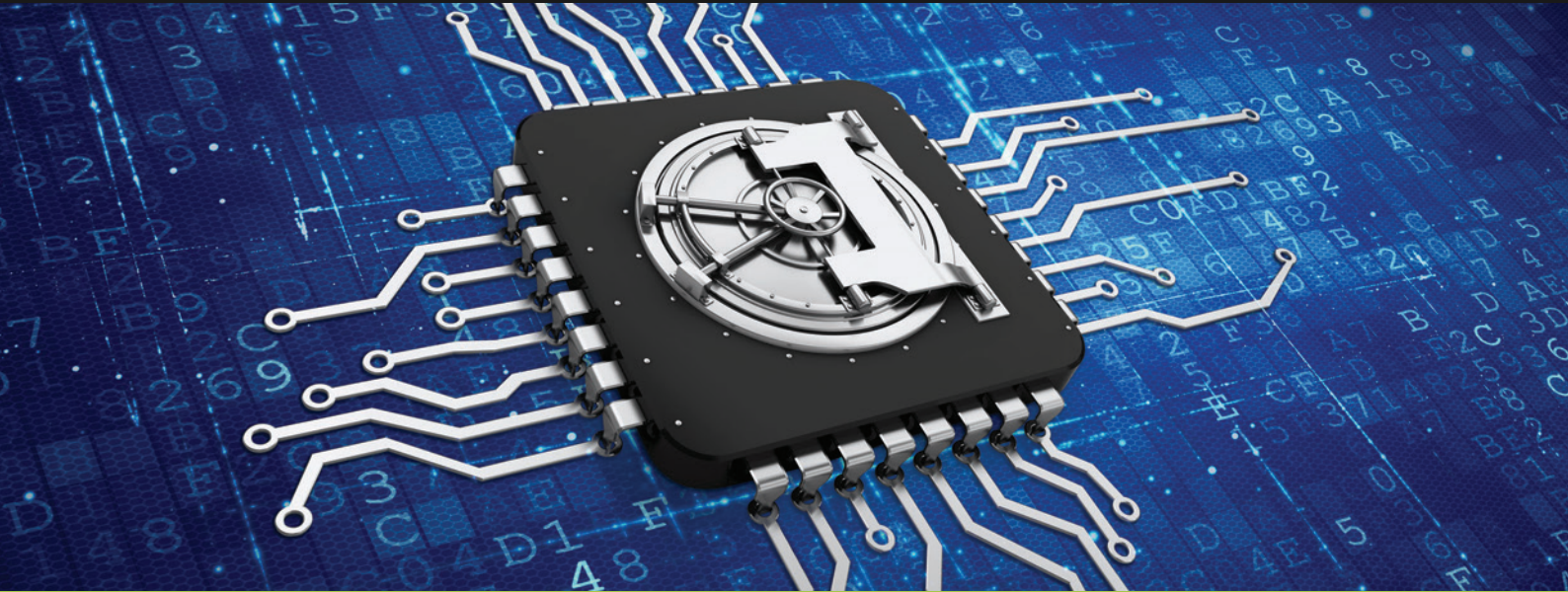




PASSMAN

ENTERPRISE PASSWORD MANAGEMENT MADE SIMPLE



Secure password safe with effective password sharing. Automatic password changing to comply with the GDPR requirements! On-Premise or Cloud version.

WHY PASSMAN IS A GREAT CHOICE?



SAFE PASSWORD MANAGEMENT

Passwords are stored in a centralized environment, with enhanced permission control. This way you can guarantee that only users with adequate permissions will be granted access to certain passwords. You can share OTP using systems too.



AUTOMATIC PASSWORD CHANGE

Based on preset password policies, PassMan can automatically change passwords or SSH keys on stored and synchronized targets. Password change can be triggered after checking in a password or an SSH key or according to preset time intervals.



SAFE LOGIN

With „1-click connection“ the users will be able to connect to specific targets without having to know the Account’s credentials. You can choose browser extension or native Linux or Windows PassMan client named PMSL (PassMan Secure Login).



PASSWORD RECOVERY

When a target is restored after a backup, passwords can be out of sync. With PassMan, you can reset your old passwords just by entering the date of the desired backup, so that you login again.



TWO-FACTOR AUTHENTICATION (2FA)

The usual login name/password authentication method in PassMan can be completed by using check-in codes of external authentication providers (e.g. Google Authenticator or LastPass), which makes it possible to confirm your identity for sure.



HIGH AVAILABILITY

High availability is essential when using corporate password manager programs. Automatic failover with no downtime is ensured by a 3-member cluster solution, which makes smooth operation possible even if double errors occur.

OTHER FUNCTIONS



ENHANCED PASSWORD ENCRYPTION

Instead of storing passwords on papers and in old-fashioned physical safes, we introduce the new digital password safe, where access data are stored encrypted (AES256). To unlock the password safe, a master password is needed.



SECURE LOGIN FROM BROWSER

If you go to a web page in your browser that asks for a password to log in, PassMan will fill in the required data with a click or even automatically, and you are already logged in. You can use a password to log in, but even you can't see it.



ACTIVITY LOG

Review user actions throughout PassMan. With the help of PassMan you will know when and which user requested a new password or changed an old one on a particular system. Traceability helps the auditors and reduces the length of audits.



MANAGING SSH-KEYS

Use PassMan to import, store, generate, change SSH-Keys. Even automatically. You can also login with SSH key.



EMAIL ALERTS, NOTIFICATIONS

PassMan can send you alerts and notifications, so you can prevent any potential damage.



SIMPLE REPORTS

Use our pre-set reports, to get answers to your questions concerning your password management.



NO NEED FOR INSTALLATION

There is no need for installation in case of PassMan since the virtual machine has every component pre-installed (operational system, database handler, etc.).



FAST CONFIGURATION

It only takes 10 minutes to set-up and start PassMan. The list of passwords can be imported within minutes, the final configuration can be done within a few hours!



MICROSOFT AD INTEGRATION

User authentication can be done with Active Directory or Azure AD or Jira Cloud which reduces user administration costs. In case of error or external provider outage, local admin access is still available.



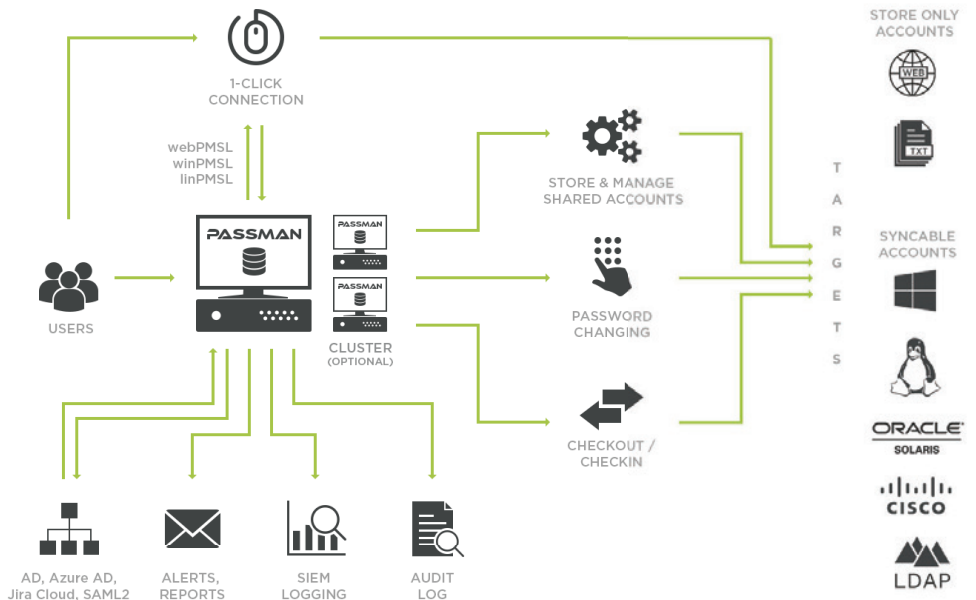
RESET PASSWORD OF WINDOWS SERVICES

If you change the password for an account that is running windows services somewhere, the passwords for windows services will also be reset on these Windows machines. This ensures that the password change policy is fully complied with.



AUTOMATIC WINDOWS DISCOVERY

Instead of time-consuming manual input, user accounts can be discovered automatically so that the machines are created. Of course, we also change the passwords for imported user accounts so that only authorized users in PassMan have access to "secrets."



Arpad Boldog

+36 30 297 8382

arpad.boldog@moresimp.com

Follow us!

passman.co